

From Commands to tips!

# RIGS OF RODS FOR DUMMIES®

LEARN  
BASICS!

Know what  
you are  
playing with!



# **INDEX**

- 1 - DOWNLOADING ROR**
- 2 - INSTALLING CONTENTS**
- 3 - GETTING MORE CONTENTS**
- 4 - GETTING STARTED**
- 5 - BASICS**
- 6 - CAMERA**
- 7 - TRUCK SHOP**
- 8 - LOAD SPAWNER**
- 9 - HANGAR**
- 10 - DOCK**
- 11 - INGAME MENU**
- 12 - TIPS AND TRICKS**
- 13 - LAG & LOW FPS**
- 14 - INTEREST POINTS**
- 15 - MULTIPLAYER**
- 16 - CONCLUSION**

# 1. DOWNLOADING RIGS OF RODS

-VISIT [DOWNLOAD.RIGSOFRODS.COM](http://download.rigsofrods.com)  
TO OBTAIN THE LATEST VERSION OF ROR.

## Rigs Of Rods - Downloads



### Windows

Download the latest version: **[RoR-Setup-0.38.67.exe](#)**

compatible with any 32 bit windows version later than windows 2000 (works also on 64 Bit)

(465147 Downloads of this version, 4001735 downloads of all versions)



### Linux

Unfortunately, due to lack of package maintainers, there are no linux binary releases available.

But you can build the game from its sources there: [http://wiki.rigsofrods.com/pages/Compiling\\_Sources](http://wiki.rigsofrods.com/pages/Compiling_Sources)



### MacOSX

Unfortunately, due to lack of MAC coders, there is no up to date port of the latest version available. Below are some old versions:

**[RoR-0.34.dmg](#)**

**[RoR-0.35.dmg](#)**

**[RoR-0.36.3-macos-beta.dmg\\_1.zip](#)**

**[RoR-Mac-0.37-beta.zip](#)**

**[RoR-Mac-0.37-beta\\_1.zip](#)**

**[RoR-0.34-macpatch.dmg](#)**

**[All MacOS downloads](#)**

### Other Downloads

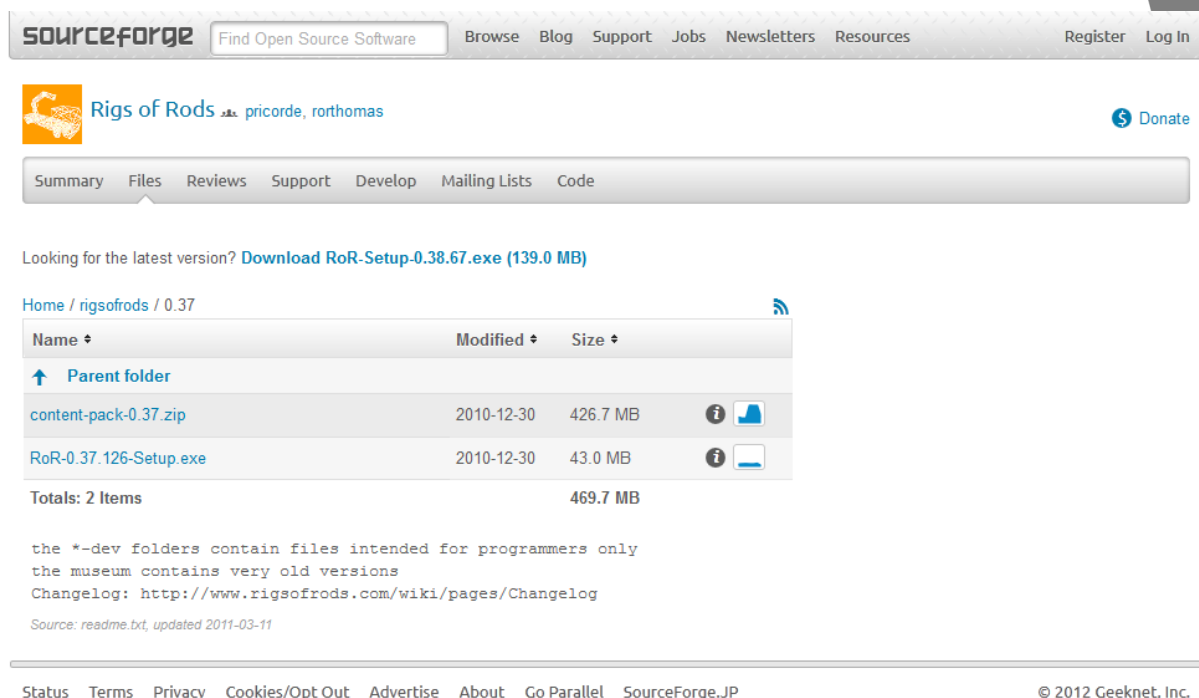
you can find all released versions on sourceforge: <http://sourceforge.net/projects/rigsofrods/files/rigsofrods/>

### Overview / Readme / FAQ

you can find more information there: <http://www.rigsofrods.com/wiki/pages/Gaggenau>

## 2. INSTALLING CONTENTS

-VISIT [HERE](#) TO OBTAIN THE CONTENT PACK







sourceforge Find Open Source Software Browse Blog Support Jobs Newsletters Resources Register Log In

Rigs of Rods pricorde, rorthomas Donate

Summary Files Reviews Support Develop Mailing Lists Code

Looking for the latest version? [Download RoR-Setup-0.38.67.exe \(139.0 MB\)](#)

Home / rigs of rods / 0.37

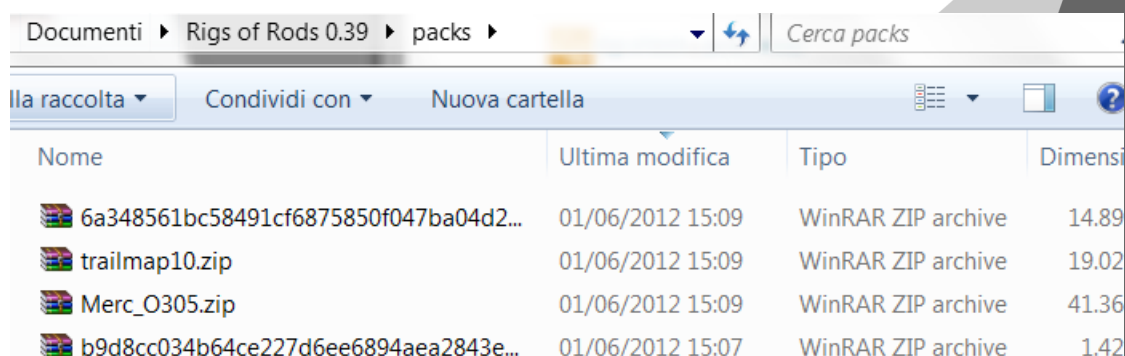
Name	Modified	Size	
Parent folder			
<a href="#">content-pack-0.37.zip</a>	2010-12-30	426.7 MB	 
<a href="#">RoR-0.37.126-Setup.exe</a>	2010-12-30	43.0 MB	 
Totals: 2 Items		469.7 MB	

the \*-dev folders contain files intended for programmers only  
the museum contains very old versions  
Changelog: <http://www.rigsofrods.com/wiki/pages/Changelog>  
Source: [readme.txt](#), updated 2011-03-11

Status Terms Privacy Cookies/Opt Out Advertise About Go Parallel SourceForge.JP © 2012 Geeknet, Inc.





-ONCE YOU GET IT UNPACK THE ZIP INTO  
USER/DOCUMENTS/RIGS OF RODS 0.XX/PACKS  
(0.XX STANDS FOR YOUR ROR VERSION)

-YOU WILL FILL THE PACK FOLDER WITH OTHER ZIPS.



Documenti ▸ Rigs of Rods 0.39 ▸ packs ▸ Cerca packs

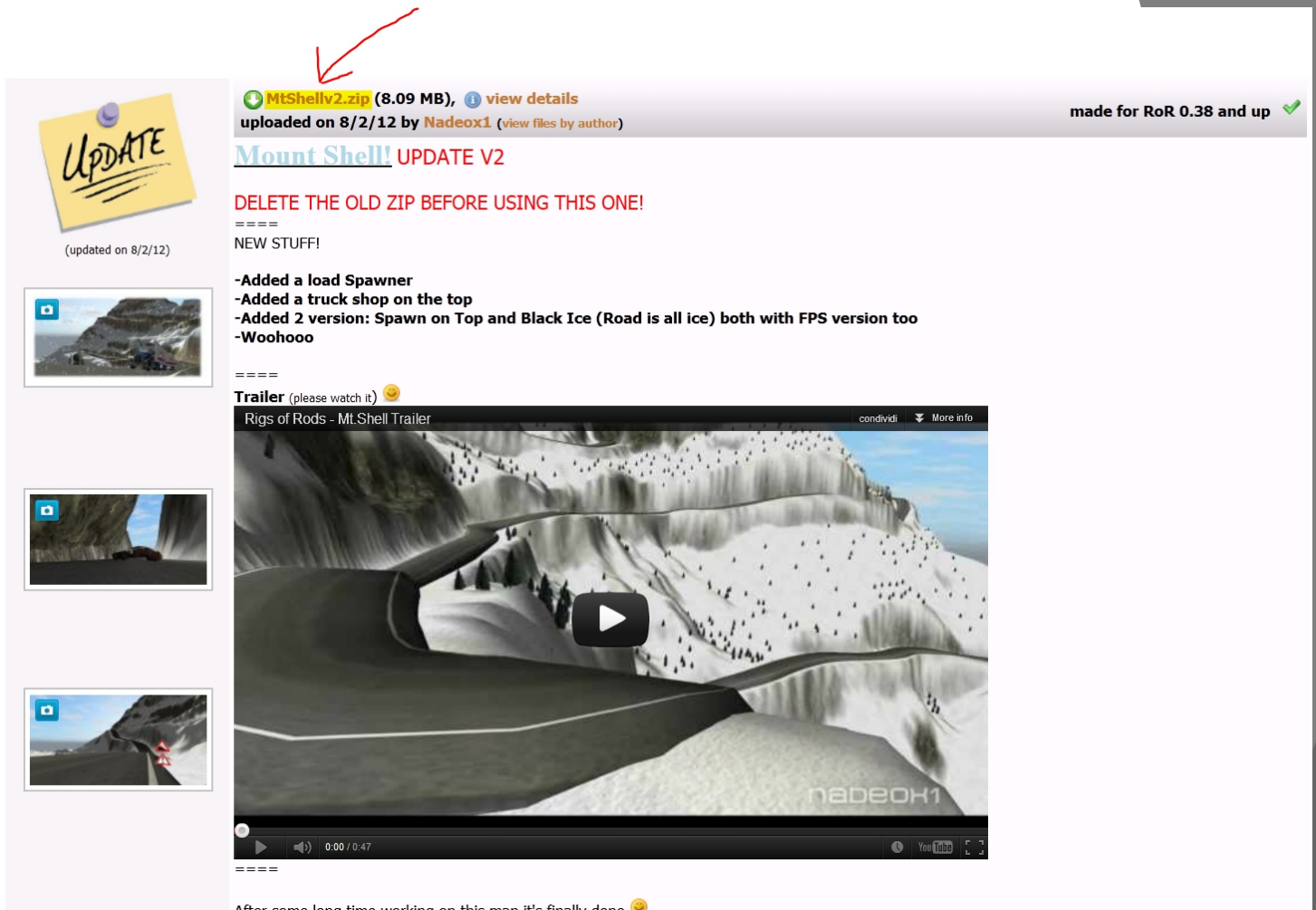
Ila raccolta ▾ Condividi con ▾ Nuova cartella

Nome	Ultima modifica	Tipo	Dimensione
 6a348561bc58491cf6875850f047ba04d2...	01/06/2012 15:09	WinRAR ZIP archive	14.89
 trailmap10.zip	01/06/2012 15:09	WinRAR ZIP archive	19.02
 Merc_O305.zip	01/06/2012 15:09	WinRAR ZIP archive	41.36
 b9d8cc034b64ce227d6ee6894aea2843e...	01/06/2012 15:07	WinRAR ZIP archive	1.42



### 3. GETTING MORE CONTENTS

-VISIT [HERE](#) TO GET NEW ADDONS  
(MAPS, VEHICLES, SKINS, ETC)



The screenshot shows a file upload interface. At the top, a red arrow points to the filename 'MtShellV2.zip' which is highlighted in yellow. Below the filename, it says '(8.09 MB), view details' and 'uploaded on 8/2/12 by Nadeox1 (view files by author)'. To the right, it says 'made for RoR 0.38 and up' with a green checkmark. Below this, the title 'Mount Shell! UPDATE V2' is shown. A red text instruction reads 'DELETE THE OLD ZIP BEFORE USING THIS ONE!'. This is followed by '====' and 'NEW STUFF!'. A list of updates includes: '-Added a load Spawner', '-Added a truck shop on the top', '-Added 2 version: Spawn on Top and Black Ice (Road is all ice) both with FPS version too', and '-Woohooo'. Another '====' separator follows. A 'Trailer (please watch it)' section contains a video player for 'Rigs of Rods - Mt.Shell Trailer'. The video shows a snowy mountain landscape with a road and a truck. The video player has a play button in the center and a progress bar at the bottom showing '0:00 / 0:47'. To the left of the main content, there are three small thumbnail images: a yellow sticky note with 'UPDATE' written on it, a screenshot of a snowy mountain, and a screenshot of a road in a snowy environment.

**UPDATE**  
(updated on 8/2/12)

**MtShellV2.zip** (8.09 MB), [view details](#)  
uploaded on 8/2/12 by **Nadeox1** ([view files by author](#)) made for RoR 0.38 and up

**Mount Shell! UPDATE V2**

DELETE THE OLD ZIP BEFORE USING THIS ONE!

====

NEW STUFF!

- Added a load Spawner
- Added a truck shop on the top
- Added 2 version: Spawn on Top and Black Ice (Road is all ice) both with FPS version too
- Woohooo

====

**Trailer** (please watch it)

Rigs of Rods - Mt.Shell Trailer

condividi [More info](#)

0:00 / 0:47

After some long time working on this man it's finally done

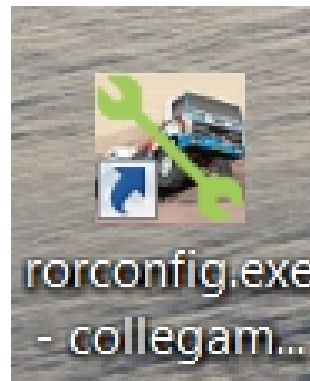
-TO DOWNLOAD ADDONS CLICK ON THE FILENAME  
(SEE HIGHLIGHTED TEXT IN PICTURE ABOVE)

-TO INSTALL JUST DROP THE ZIP INTO  
USER/DOCUMENTS/RIGS OF RODS 0.XX/PACKS

**NOTE - DO NOT EXTRACT THE ZIP**

## 4. GETTING STARTED

**-RUN RORCONFIG.EXE**



(IF NOT ON DESKTOP, SEARCH FOR IT IN THE INSTALLATION FOLDER)

**-SET UP YOUR CONFIGURATION > CLICK “SAVE & PLAY”**

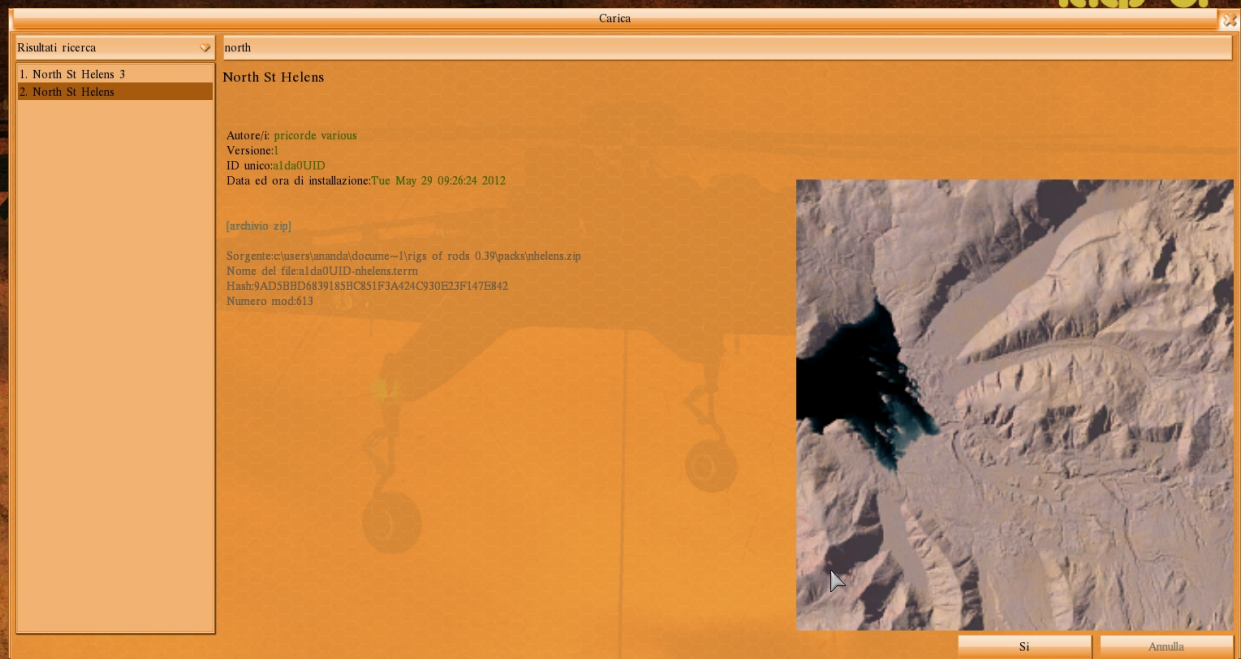


**NOTE - IT'S SUGGESTED TO FIRST TRY WITH LOW SETTINGS**

## 5. BASICS

**-ON THE FIRST RUN ROR WILL CREATE A CACHE.  
BE PATIENT, IT MAY TAKE SOME MINUTES.**

**-ONCE IT'S DONE, YOU WILL HAVE TO CHOOSE A TERRAIN**



**-FOR EXAMPLE WE CHOOSE NORTH ST. HELENS  
(INCLUDED IN THE CONTENT PACK)**

**NOTE - YOU CAN USE KEYBOARD TO NAVIGATE TROUGH MENU**



**-ONCE MAP LOADS YOU WILL SEE THIS:**



**-YOU ARE THIS DUDE. WE KINDLY CALL HIM MR.RORBOT.**

**NOTE - CHARACTER MAY VARY, THE ONE IN THE PICTURE IS THE NEW RORBOT INCLUDED IN THE VERSION 0.39**

**-HIS CONTROLS ARE:**

**W - FORWARD | A - STRAFE RIGHT | S - BACKWARD | D - STRAFE LEFT  
SPACEBAR - JUMP**

**-YOU CAN ALSO USE ARROWS**

**UP - FORWARD | RIGHT - TURNS RIGHT | DOWN - BACKWARD | LEFT - TURN LEFT**

## **6. CAMERA BASICS**

**-YOU CAN CONTROL CAMERA BY USING NUMPAD**

**8 - CAMERA UP | 2 - CAMERA DOWN | 4 - CAMERA RIGHT  
6 - CAMERA LEFT | 5 - CENTER CAMERA**



**-YOU CAN CHANGE FIELD OF VIEW WITH:**

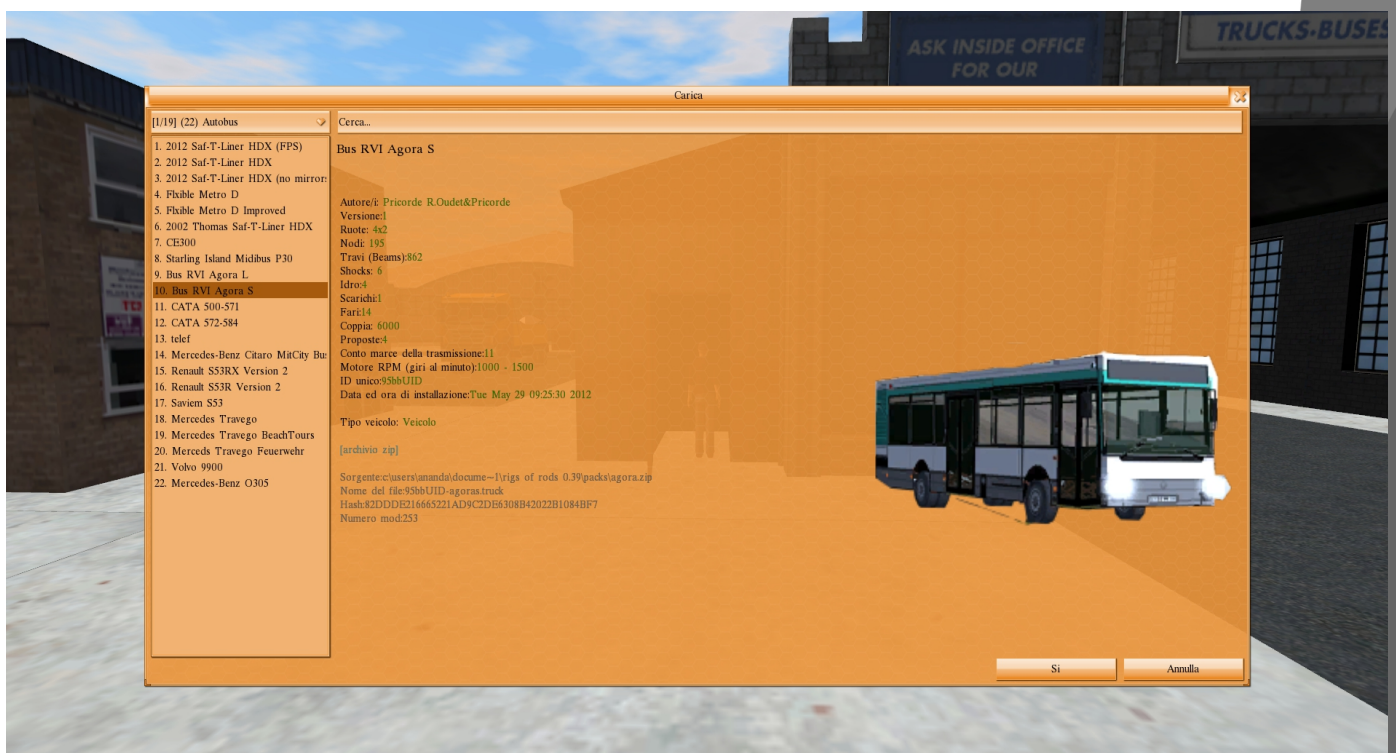
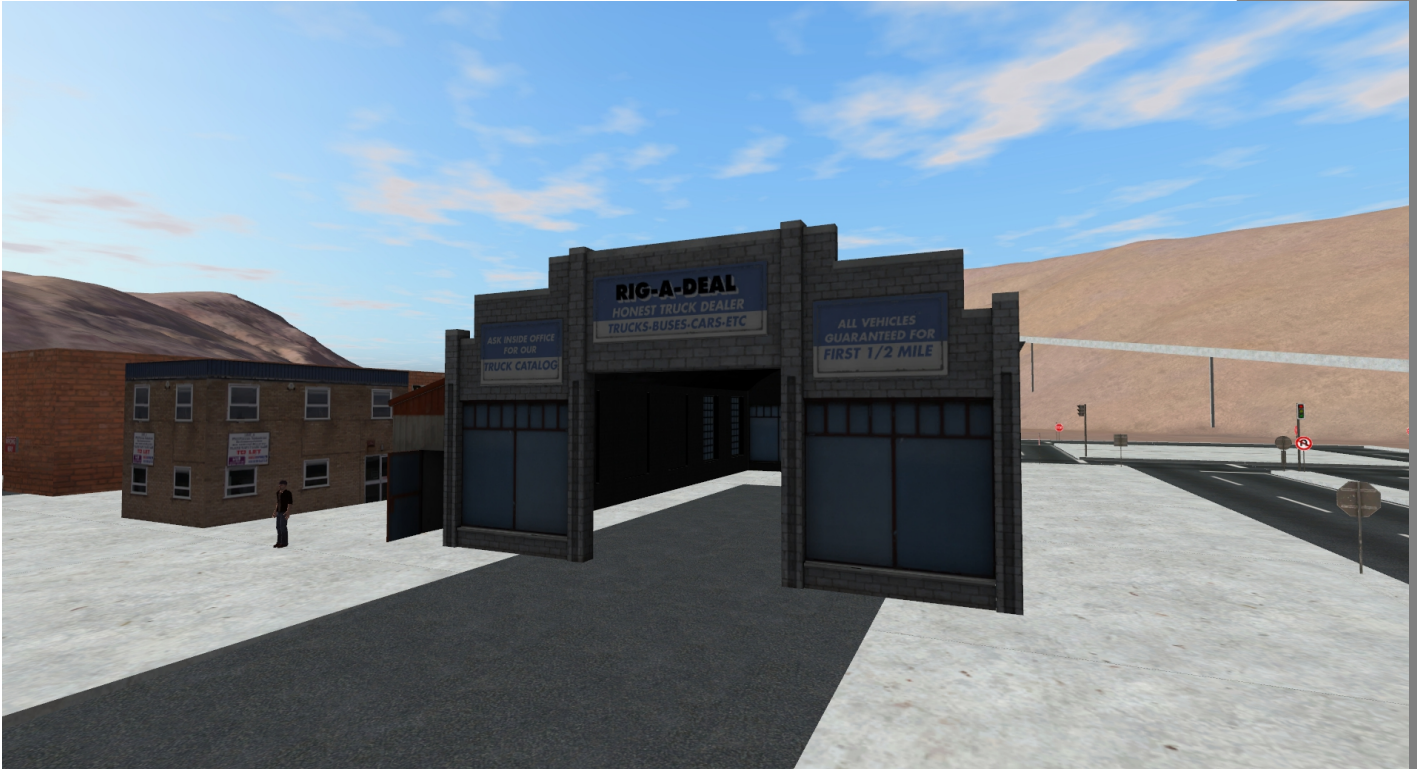
**7 - LESS FOV  
CTRL + 7 - MORE FOV**

**-YOU CAN ALSO USE RIGHT CLICK + MOUSE TO ROTATE  
AND MOUSEWHEEL TO ZOOM OUT OR IN**



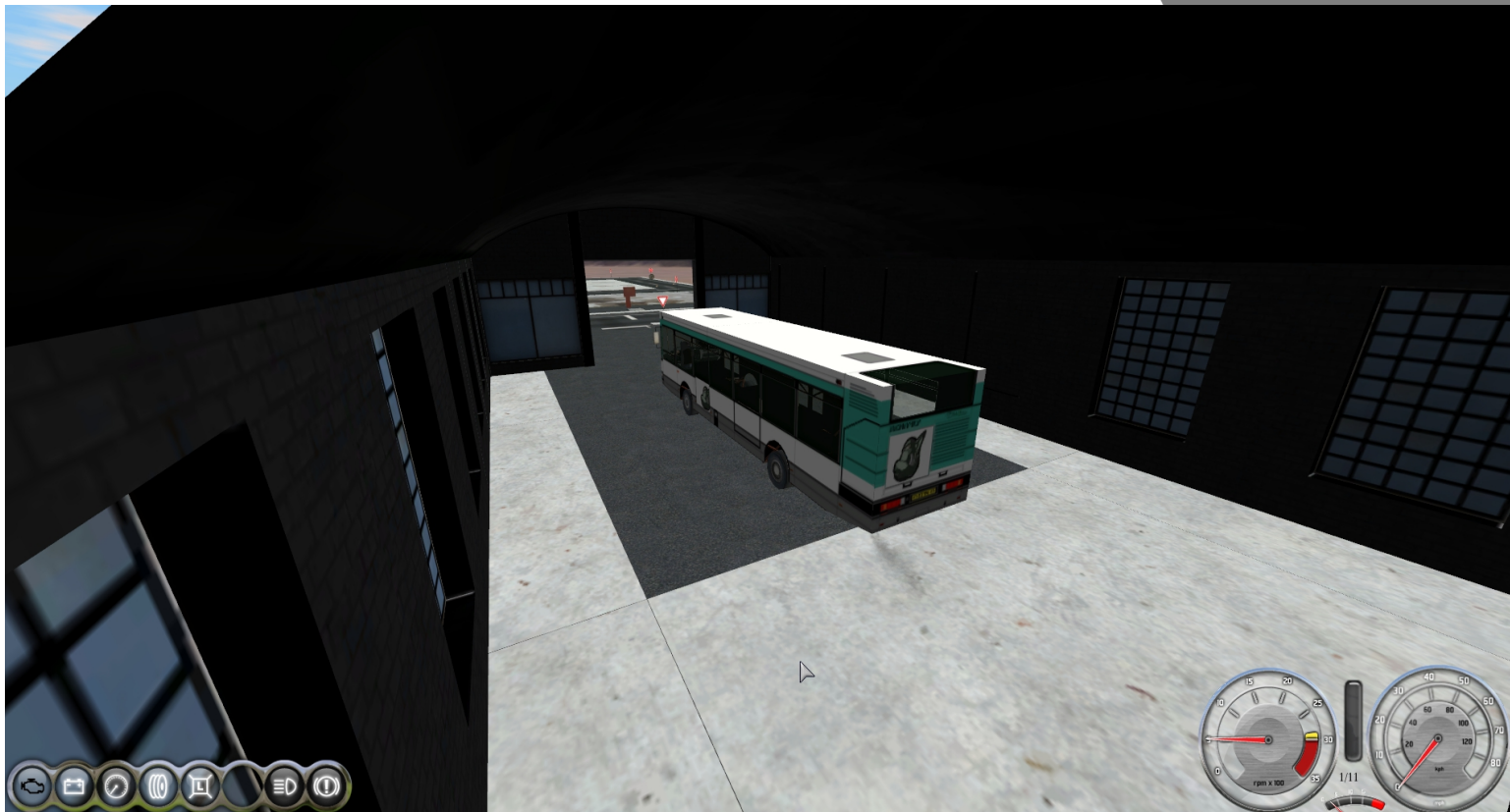
## 7. TRUCKSHOP

**-THIS IS A TRUCKSHOP, RUN INTO THE OPEN DOOR TO OPEN THE VEHICLE SELECTOR MENU**



**-WE WILL CHOOSE "BUS RVI AGORA S"**

**-YOU WILL SEE THIS:**



**NOTE - HUD MAY VARY ON VERSIONS  
THE ONE YOU SEE IS THE 0.39 VERSION**

**-YOU CAN DRIVE BY USING ARROWS KEYS**

**GEAR MODE LAYOUT IS LIKE THIS**

**R - REAR GEAR**

**N - NEUTRAL**

**D - DRIVE < DEFAULT ONE**

**1 - FIRST GEAR**

**2 - SECOND GEAR**

**YOU CAN USE PAGEUP/PAGEDOWN TO SWITCH BETWEEN**

**TO START A CAR USE "X" FOR BATTERY AND "S" FOR IGNITION**

## **-ADDITIONAL CONTROLS:**

**i – TO RESPAWN VEHICLE**

**BACKSPACE - TO RESET VEHICLE**

**T - STATISTIC AND VEHICLE INFOS**

**L - ATTACH LOAD (ON WRECKERS OR CRANES)**

**O - SECURE LOAD (SAME AS ABOVE)**

**N - HEADLIGHTS**

**M - BEACONS (ON VEHICLES HAVING BEACONS)**

**H - HORN**

**Q - TRANSMISSION MODE**

**A - SHIFT UP GEAR**

**Z - SHIFT DOWN GEAR**

**C - CHANGE CAMERA VIEW**

**R - RESCUE TRUCK (ON MAPS HAVING IT)**



**P - PARKING BRAKE**

**CTRL + 1-9 (NOT NUMPAD) - ADDITIONAL LIGHTS**

**F1-F12 - ADDITIONAL CONTROLS (EX. CRANES)**

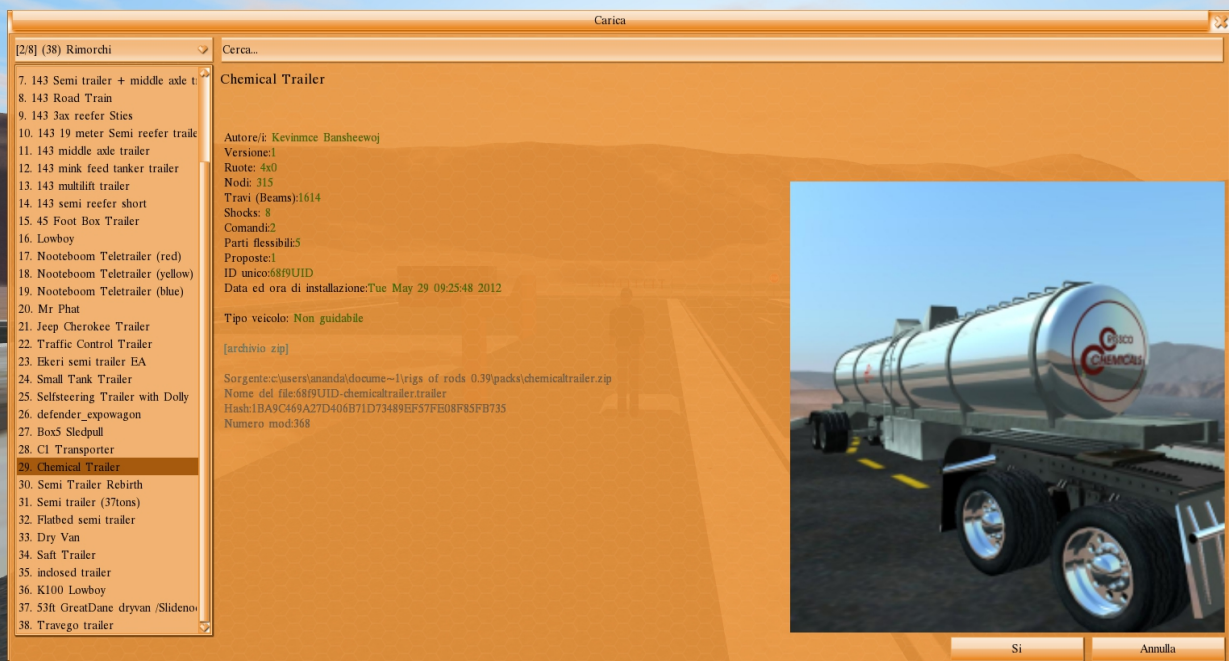
**CTRL + F1-F12 - ADDITIONAL CONTROLS (EX. CRANES)**

**ALT + F1-F12 - ADDITIONAL CONTROLS (EX. CRANES)**



## 8. LOAD SPAWNER

- THIS IS A GENERIC LOAD SPAWNER
- STAND ON THE SMALL PLATE TO BRING UP THE MENU



- WE WILL CHOOSE CHEMICAL TRAILER

**-YOU CAN USE A SEMI TRUCK TO ATTACH (L) THE TRAILER**



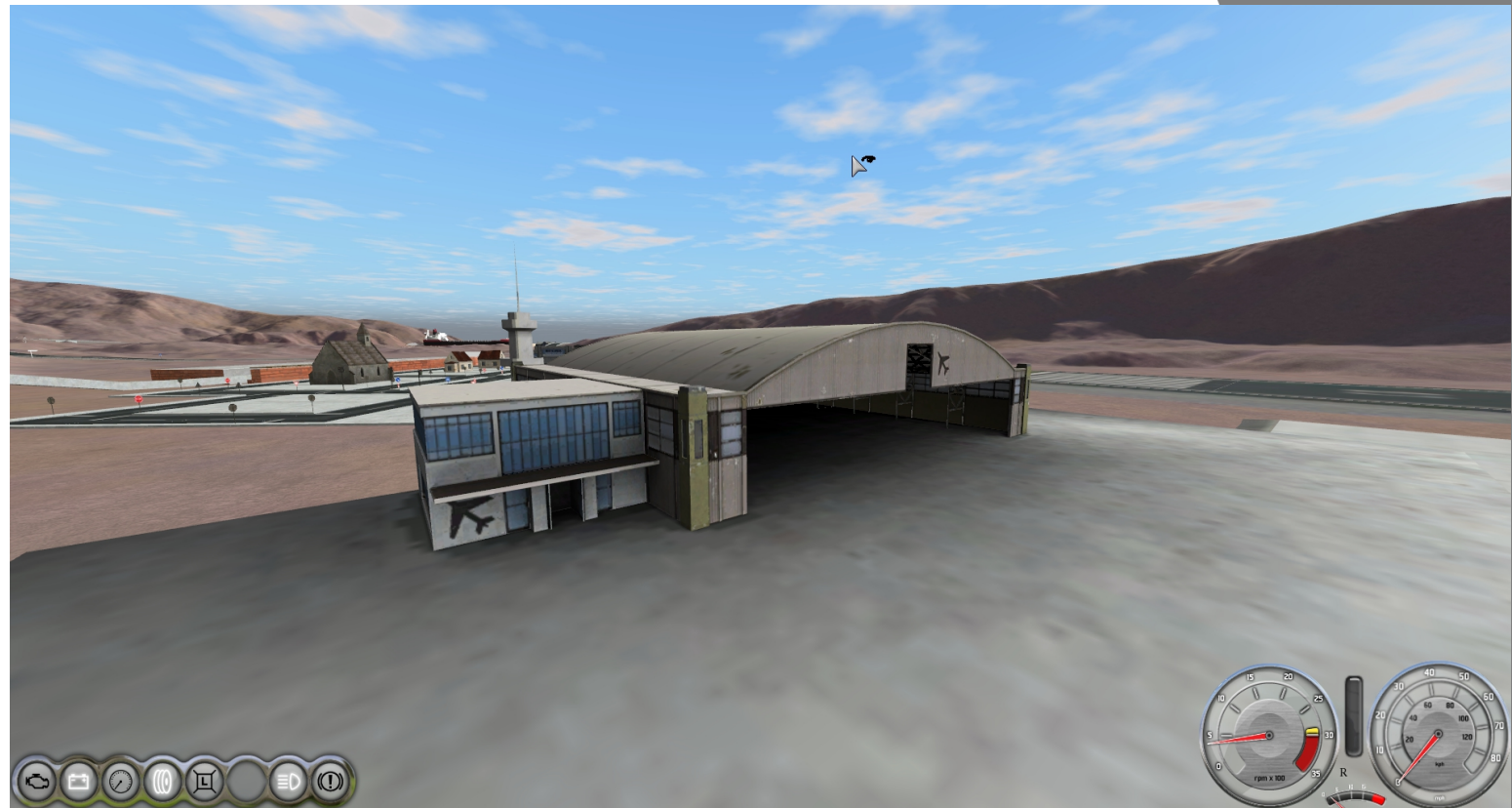
**-GENERIC TRAILER CONTROLS ARE:**

**F1 - F2 - RAISE/LOWER LEGS**

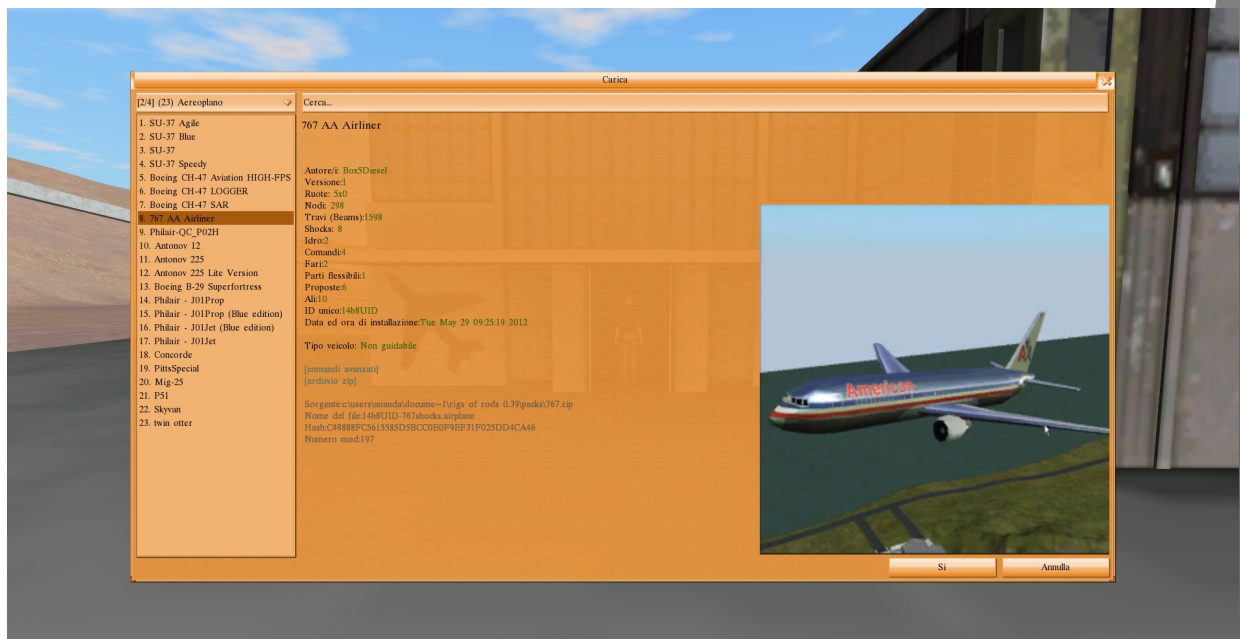


## 9. HANGAR

**-HERE YOU CAN SPAWN AIRPLANES AND HELICOPTERS**



**-JUST WALK INTO THE OPEN DOOR TO BRING THE MENU**



**-WE WILL USE THE 767 AIRLINER**

**-YOU CAN USE BOTH MOUSE INTERACTION WITH HUD OR KEYBOARD.**



## **KEYBOARD CONTROLS:**

**CTRL + HOME - TURN ON ALL ENGINES**

**PAGEUP/PAGEDOWN - THROTTLE (+CTRL - INSTANT MAX/MIN THROTTLE)**

**M - POSITION LIGHTS**

**P - BRAKE**

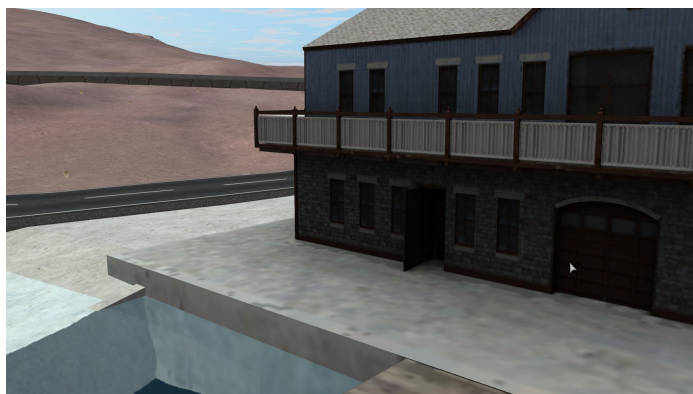
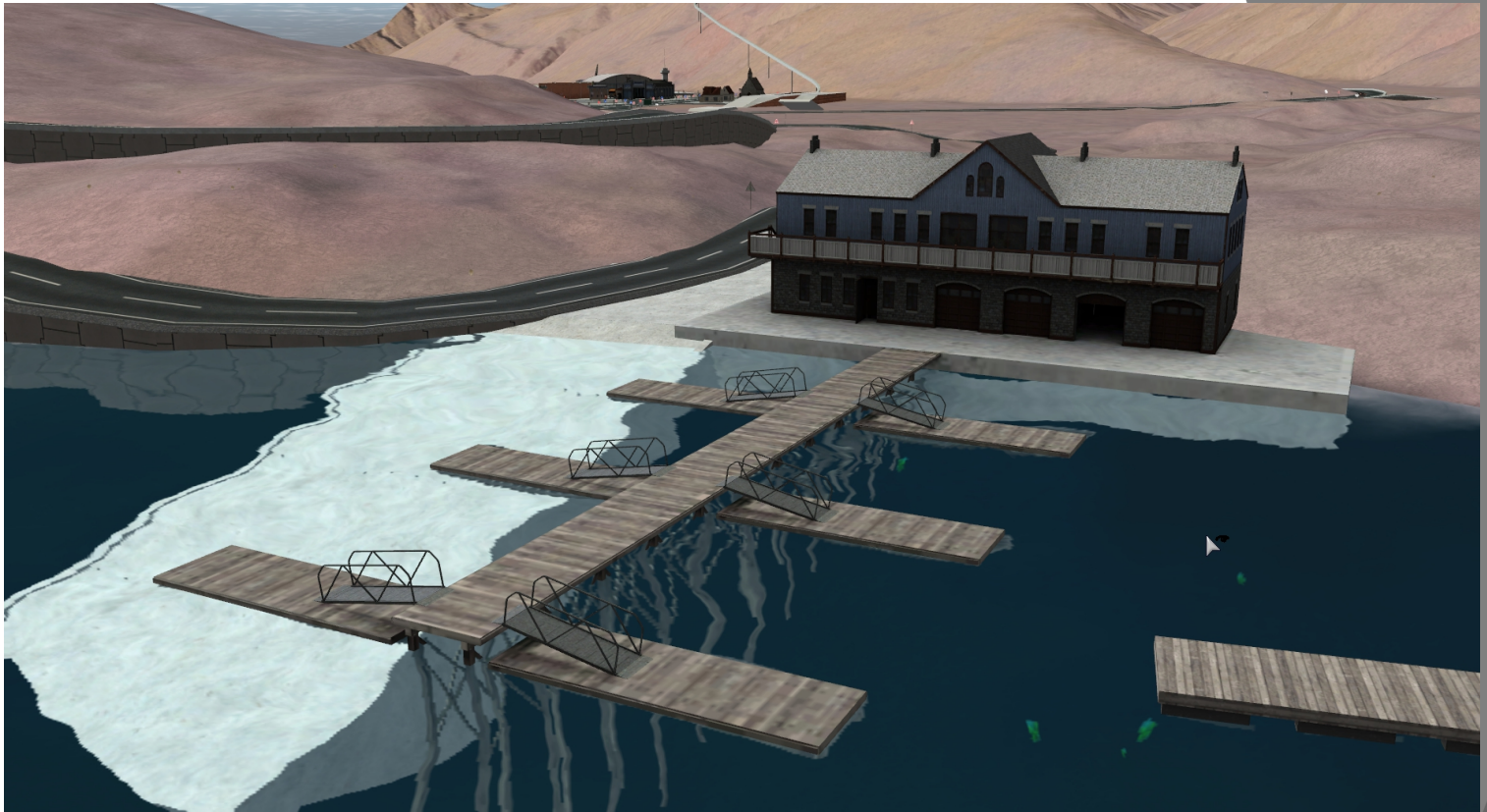
**ARROWS - PITCHING & ROLLING**

**Z/X - YAW**



## 10. DOCK

**-HERE YOU CAN SPAWN BOATS**



**-ENTER THIS DOOR FOR MENU**

## **-BOAT CONTROLS:**

**PAGEUP/PAGEDOWN - THROTTLE**  
**ARROWS - TURN**



# 11. INGAME MENU

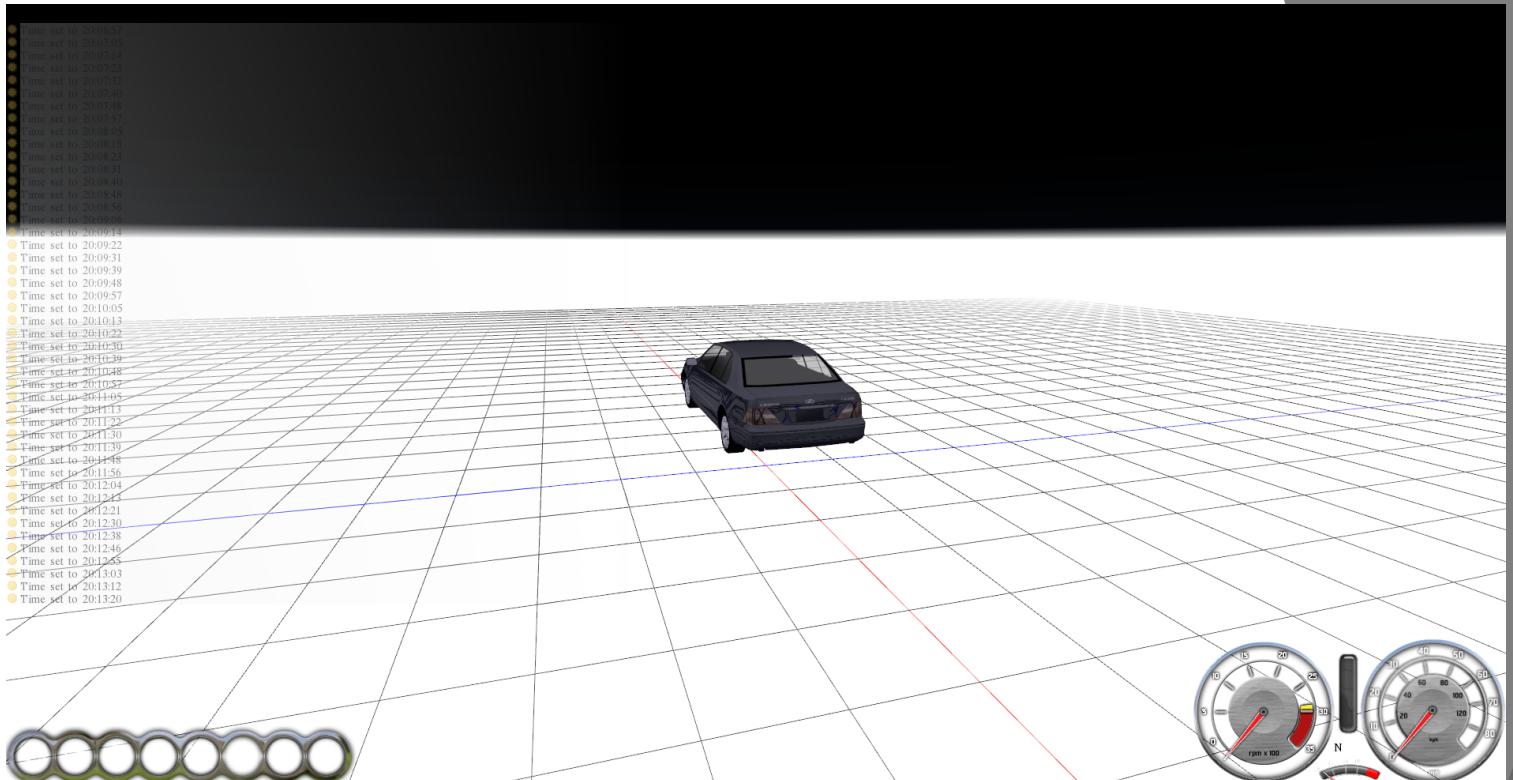
**-IF YOU MOVE THE MOUSE ON THE TOP OF THE SCREEN A TOOLBAR WILL APPEAR.**



- YOU CAN USE IT TO SPAWN VEHICLES (ALL KIND)**
- YOU CAN SAVE/LOAD VEHICLE POSITIONS**
- YOU CAN USE DEBUGGING TOOLS (FOR CONTENT CREATION)**

## 12. TIPS AND TRICKS

**-IF YOU USE CAELUM SKY, YOU CAN USE NUMPAD +/- TO CHANGE TIME OF THE DAY (+SHIFT - FASTER)**



**-IF YOU ENABLED WAVES, THE FARTHER YOU GET FROM MAP, THE BIGGER THE WAVES!**

**-YOU CAN GO FREECAMERA MODE WITH SHIFT + C THEN YOU CAN GO FIXED CAMERA WITH CTRL+C**

**-YOU CAN GET EXCLUSIVE BETAS BY LOOKING TROUGH ROR FORUMS**

**-YOU CAN JOIN [IRC CHAT](#) TO GET LIVE HELP!**



## **13. LAG & LOW FPS**

### **RECOMMENDED SYSTEM REQUIREMENTS**

- CPU: P4 or equivalent AMD at 2GHz or more, better with HyperThreading technology or dual-core (RoR has dual-core support)
- RAM: 512 MB of RAM
- Video Card: 3D Accelerated with 128MB of VRAM or more
- DirectX 9c on Windows, or GLX on Linux
- supports force feedback joysticks and wheels (except on Linux)
- supports 3D sound effects with multichannel sound cards (enable the hardware sound renderer)

**THESE ARE THE REQUIREMENTS TO RUN  
BASIC VEHICLES**

**TO RUN MORE COMPLEX VEHICLES (GABESTER'S  
CARS/CRANES/ETC) IT'S SUGGESTED TO HAVE A  
FASTER PC.**

**ROR IS A CPU INTENSIVE SIMULATOR, SO THE FASTER  
CPU YOU HAVE, THE BETTER IT IS.**

**IF YOU HAVE LOW FPS, THE ONLY FIX IS TO UPGRADE  
YOUR PC.**

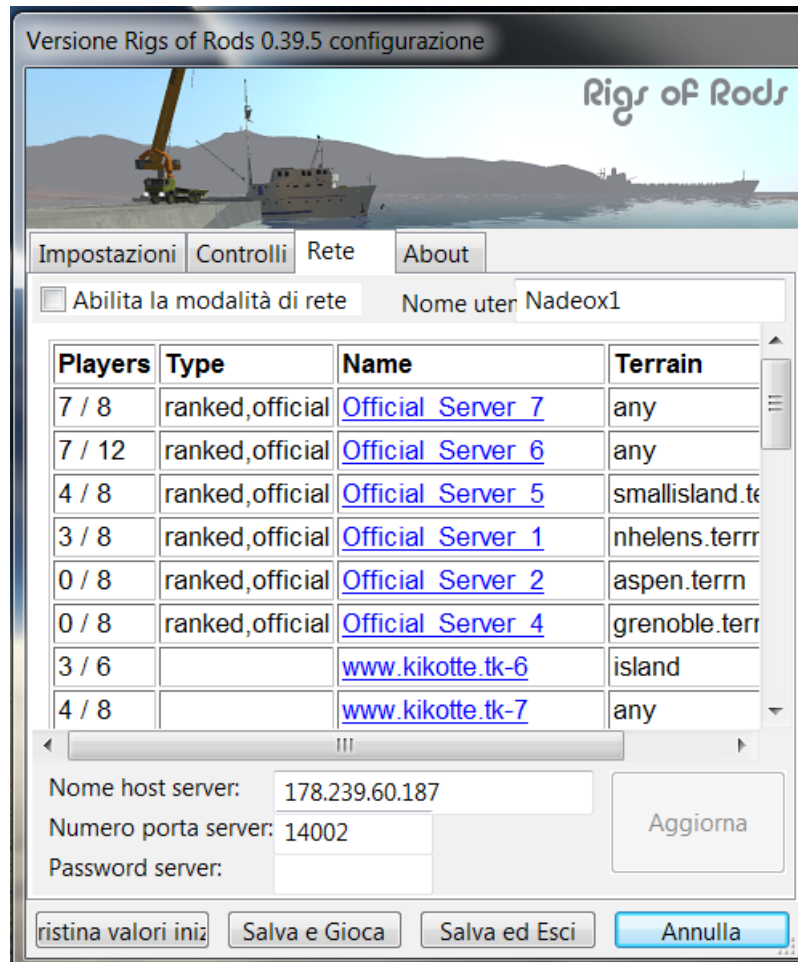
**EX. AMD PHENOM 9600 IS ENOUGH TO USE GAVRIL ZETA  
AT 30-40FPS.**

## 14. INTEREST POINTS

- [HERE](#) YOU CAN FIND THE WIKI, TO KNOW MORE ABOUT ROR AND CHECK THE CHANGELOG.
- YOU CAN REPORT ANY BUG BY USING REDMINE. YOU CAN FIND IT [HERE](#). PLEASE BE SURE YOUR BUG IS NOT IN THE LIST YET.
- FORUMS ARE THE HEART OF ROR COMMUNITY, YOU WILL FIND A LOT OF INTERESTING THINGS THERE.

# 15. MULTIPLAYER

**-YOU CAN PLAY MULTIPLAYER BY OPENING RORCONFIG.EXE AND GOING INTO NETWORK TAB, CHOOSE A SERVER AND CLICK "SAVE & PLAY".**



**NOTE - YOU MUST HAVE THE CARS PEOPLE USE TO SEE THEM, OR THEY WILL BE INVISIBLE FOR YOU**

## **16. CONCLUSION**

**WELL, THIS IS ALMOST EVERYTHING YOU  
NEED TO KNOW TO USE ROR.  
I HOPE THIS HELPED YOU.**

**CYA IN ROR :)**



**GUIDE CREATED BY NADEOX1**